

BARACUDA

Switchboards with disconnectable drawers W.F.D.
or withdrawable drawers W.W.W



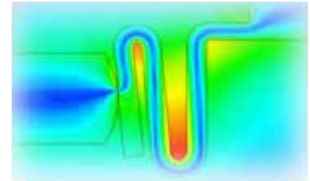
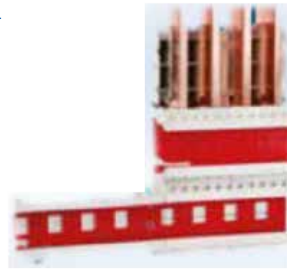
Baracuda switchboards are dedicated to TGBT or MCC type applications, service index 2.2.3 or 3.3.3, connection type W.F.D or W.W.W.

Thanks to their different drawers heights, they are particularly well suited to motor control applications (MCC).

The integrated ARC-Flash protection provides an additional level of protection for the users.

General characteristics

- Switchboards with disconnectable or withdrawable drawers
- Power distribution applications up to **6 300 A**
- Choice of electrical equipment: any
- Service Index: **IS 3.3.3** or **2.2.3**
- Mobility index: **W.W.W** or **W.F.D**
- Maximum caliber of functional units in drawers: **630A**
- Sectional separation form: **3a** up to **4b**
- Protection level: **IP31**
- Front and rear connection: bottom and top
- Tested and certified according to: **IEC 61439-2 / BS EN 61439-1**
- Certificates: UL - Seismic
- Standard painting: **RAL 7035**



Guaranteed safety

- Individual outgoing feeder consignment
- Evolution of modularity while panel in service
- Inspection of functional units possible while panel in service
- Test function
- ARCON® arc detection and extinction system option



Drawers

The drawers have a different height depending on the application

- Power distribution drawers:
 - H 150: 200A 3P
 - H 225: 250A 3P or 4P
 - H 300: 630A 3P or 4P
- Direct starter drawers:
 - H 75: 15 KW
 - H 150: 55 KW
 - H 225: 110 KW

